

Prema Court

A purpose-built service in the heart of the community for adults with severe and enduring mental health needs

DeepdeneCare



Focusing on longer term rehabilitative support, Prema Court specialises in caring for individuals requiring ongoing assistance with essential living skills who may be at significant risk of self-neglect or exploitation.

Prema Court

Prema Court provides community based residential services offering support and rehabilitation for adults experiencing a wide range of mental health issues. Centrally located in Old Trafford, Manchester, it is ideally situated to take advantage of excellent local facilities and transport links as well as all of the attractions of a major city.

Deepdene Care, an established national mental healthcare provider, has operated Prema Court units since their acquisition in 2008. With services operating throughout the UK, the group has developed strong and stable compliance, governance and central support frameworks which Prema Court benefits from.

Prema Court is a specialist service offering solutions for adults with a history of behaviours which often result in placement difficulties. Residents at Prema Court often exhibit complex mental health needs including severe and enduring mental illnesses, challenging behaviour, and drug or alcohol dependency. We are well equipped to accommodate those who exhibit behaviours such as self-harm, and individuals with a forensic history, or dual diagnosis.

Individual care

A purpose built service meeting the needs of up to 44 residents Prema Court is spread over three floors and two buildings offering spacious and modern accommodation and facilities including individual lounges, residents' kitchens, communal dining and recreational areas. Residents at Prema Court are supported by a highly skilled multi-disciplinary team, consisting of an experienced and qualified home manager leading a team of highly skilled nurses, key workers, care support workers and activities staff who provide 24 hour support.

Prema Court provides a particularly high level of support to its Residents, who are encouraged to focus on their recovery through the provision of individually tailored care plans that are outcome based. These address the practical, social and psychological needs of each person, enabling them to live as independently as possible.

Service users are encouraged to focus on their recovery by working with us to develop individualised pathways of care that encourage positive risk taking and focus on individuals' strengths and aspirations, enabling them to take an active part in their care and rehabilitation program.



Positive outcomes

Our residents are individuals in their own right with their own specific and often complex needs, and personalisation is a key element of our service. Our goal is to offer the range of support needed to enable the individual to work towards achieving the most positive outcome for them, whether a return to independent living and employment, or to a supported environment where they can access all the services the community has to offer.

Prema Court offers access to nurse led services and also benefits from being a short distance from Norton Street, another Deepdene Care Home which provides more rehabilitative focused residential care.

Prema Court

Registered with CQC (44)

A spacious family home with extensive secured gardens and secure gated entrance. Prema Court consists of two buildings within the same grounds, which are Clifton House and Brook House.

Clifton House

Clifton House is registered for 32 bedrooms which comprises of three floors. There are at least two communal bathrooms on each floor and a lounge, plus multiple dining/kitchens for residents. On the ground floor there is a large lounge, large dining room, two resident's kitchens, the main kitchen, three shower rooms and four toilets. There are also offices, medication and storage rooms and a multi faith prayer room. Some bedrooms on the ground floor have en-suites and all others have a wash basin. All rooms have TV points and an emergency care call system.

Brook House

Brook House comprises of two floors and is registered for 12 bedrooms. There are two lounges and a kitchen on the ground floor, a dining room and small games room and on the upper floor there is also a lounge and some office space



What we offer:

We offer people over the age of 18 years old a chance to live in a community and take control of their lives through intensive support from our team. We work on the recovery model of care through regular multiagency reviews, involvement of residents, carers and commissioners. The progress is measured through health and social care outcomes, which matter most to residents, carers and regulatory bodies.

For our Residents:

- An opportunity to live in a homely environment and develop independence.
- Staff team who can understand your difficulties, work with you and incorporate your views and wishes when making decisions about you.
- To support you to achieve independence through education, vocational training and voluntary work experience placements.
- Sign posting to advocacy services that will support you to represent your views.
- Professionals who can provide information and support you to manage your mental health problems and difficulties.

For Families:

- A staff team who you can trust and have regular contact with. Consistent group of professionals who are with you throughout the journey of your family member.
- Involvement in your family member's care and all views to be taken on board. Support to maintain and improve the relationship with your family member.
- To support you to understand your family member's difficulties and any treatment that they are receiving.
- Family/Carers are welcome to visit people at the home.
- Feedback questionnaires will be circulated in order to obtain the views from family members.

For Commissioners:

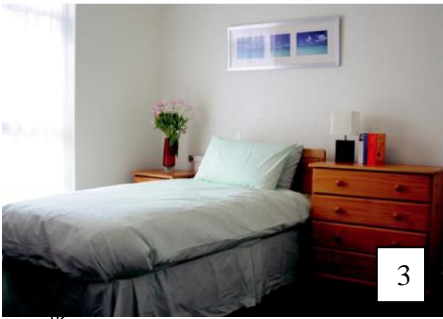
- Bespoke package of care to meet the individuals' complex mental health and social care needs.
- Consistency of care through in house mental health team.
- Experience and expertise of the Specialist Mental health team ensuring reduction in hospital admissions.
- Recovery and Quality assurance through outcomes.
- 24 hours mental health on call to provide crisis management.
- Qualified mental health nurses and staff on site.
- Value for money



1



2



3

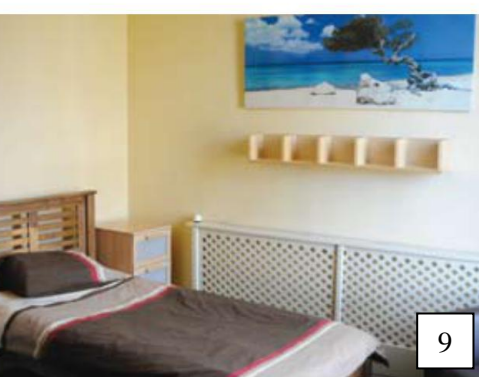


4

03.



8



9

Creating a relaxing and homely environment for residents at Clifton House.

1. Hallway
2. Dining room
3. Bedroom
4. Salford Quays
5. Bathroom

Creating a relaxing and homely environment for residents at Brook House.

6. Rear garden
7. Dining room
8. Conservatory and games room
9. Bedroom

Visit us at www.deepdenecare.org

Referrals

At Deepdene Care we welcome referrals from all areas of mental health care and are committed to making this process as unobtrusive and stress free as possible.

The referral process is reactive and easy to use, with a direct line to our dedicated referral team.

Following a referral a senior member of our multi-disciplinary team will arrange to carry out a full assessment within 24 hours at a time and venue that best suits the individual's need.

After this assessment our multi-disciplinary team will review the case and if suitable a placement offer and full breakdown of costs will be sent to the referring agency within seven working days.

Once the placement is agreed we will work closely with the individual and their care team to ensure a smooth and successful transition.

If you would like to arrange an informal visit please contact us on our referral line:

0800 313 4774

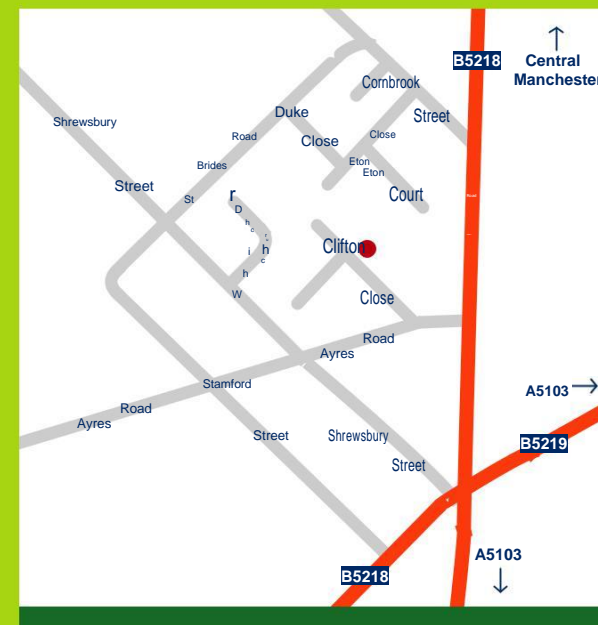
www.deepdenecare.org

DeepdeneCare

Prema Court
Clifton Close
Ayres Road
Manchester
M16 7NX

t: 0161 226 7698

e: referrals@deepdenecare.com



How to find Prema Court:

Road:

Prema Court is easily accessible by road, and is just five minutes from junction 3 of the M56, via A5103 Princess Parkway. Parking is available.

Public transport:

Bus routes 15 and 85 stop just outside Prema Court

Piccadilly Train Station is 20 minutes away.

Prema Court is a 15 minute taxi-ride from Manchester Airport.

Prema Court's Referral criteria

✓ ACCEPT	X DO NOT ACCEPT
<ul style="list-style-type: none"> Residents with severe and enduring mental illnesses e.g. personality disorder, schizophrenia, bipolar etc who currently need ongoing extensive support Dual diagnosis 	<ul style="list-style-type: none"> Individuals with no mental health conditions
<ul style="list-style-type: none"> Past offending behaviour Drug and alcohol misuse with a mental health diagnosis. Challenging behaviour Self-harm 	<ul style="list-style-type: none"> Severe mobility issues. We have limited ground floor rooms. We cannot cater for residents with severe physical health issues e.g. severe difficulty walking, washing, requiring intense personal care etc - we focus on mental health support and recovery
<ul style="list-style-type: none"> Must be engaged with the mental health care team. 	<ul style="list-style-type: none"> Children 0-17 years
<ul style="list-style-type: none"> Adults: age range 18 + 	
<ul style="list-style-type: none"> Male and female residents 	
<ul style="list-style-type: none"> Serious arson or sexual offences to be considered on a case by case bases 	
<ul style="list-style-type: none"> Residents on CTO / DOLS and other orders/restrictions 	
<ul style="list-style-type: none"> Requiring ONLY prompts or limited personal care e.g. changing pads/clothes/bedding for incontinent residents. 	
<ul style="list-style-type: none"> Individuals requiring ongoing assistance with essential living skills that may be at significant risk of self-neglect or exploitation. 	

Our other Care Homes' Referral Criteria

Norton Street- Manchester, M16 7GQ	Deepdene House- London, SW16 2EA	Deepdene Court- West Sussex, BN17 5HS	Woodtown House- Devon, EX39 4PP
<ul style="list-style-type: none"> Stable mental health/substance misuse. We are a step-down facility from residential setting, so a level of independence is required for all residents. Due to service provided over several independent houses a constant staff monitoring is not available 	<ul style="list-style-type: none"> Residents with severe and enduring mental illnesses e.g. personality disorder, schizophrenia, bipolar etc Dual diagnosis 	<ul style="list-style-type: none"> Residents with severe and enduring mental illnesses e.g. personality disorder, schizophrenia, bipolar etc who currently need ongoing extensive support Dual diagnosis 	<ul style="list-style-type: none"> Residents with severe and enduring mental illnesses e.g. personality disorder, schizophrenia, bipolar etc who currently need ongoing extensive support Dual diagnosis
<ul style="list-style-type: none"> Residents with severe and enduring mental illnesses e.g. personality disorder, schizophrenia, bipolar, dual diagnosis past offending behaviour drug and alcohol misuse (under control) Self-harm (under control) challenging behaviour (under control) 	<ul style="list-style-type: none"> Past offending behaviour Drug and alcohol misuse Challenging behaviour Mild learning disability Early dementia care Self-harm 	<ul style="list-style-type: none"> Past offending behaviour Drug and alcohol misuse with a mental health diagnosis. Challenging behaviour Self-harm 	<ul style="list-style-type: none"> Past offending behaviour Drug and alcohol misuse with a mental health diagnosis. Challenging behaviour Self-harm
<ul style="list-style-type: none"> Must be engaged with mental health care team. 	<ul style="list-style-type: none"> Must be engaged with the mental health care team. 	<ul style="list-style-type: none"> Must be engaged with the mental health care team. 	<ul style="list-style-type: none"> Must be engaged with the mental health care team.
<ul style="list-style-type: none"> Adults - age range 18 + 	<ul style="list-style-type: none"> Adults: age range 18 + 	<ul style="list-style-type: none"> Adults: age range 18 + 	<ul style="list-style-type: none"> Adults: age range 18 +
<ul style="list-style-type: none"> Male and female residents 	<ul style="list-style-type: none"> Male and female residents 	<ul style="list-style-type: none"> Male and female residents 	<ul style="list-style-type: none"> Male and female residents
<ul style="list-style-type: none"> Serious arson or sexual offences to be considered on a case by case bases 	<ul style="list-style-type: none"> Serious arson or sexual offences to be considered on a case by case bases 	<ul style="list-style-type: none"> Serious arson or sexual offences to be considered on a case by case bases 	<ul style="list-style-type: none"> Serious arson or sexual offences to be considered on a case by case bases
<ul style="list-style-type: none"> No CTO/DOLS restrictions 	<ul style="list-style-type: none"> Residents on CTO / DOLS and other orders/restrictions 	<ul style="list-style-type: none"> Residents on CTO / DOLS and other orders/restrictions 	<ul style="list-style-type: none"> Residents on CTO / DOLS and other orders/restrictions
<ul style="list-style-type: none"> Requiring ONLY prompts or limited personal care e.g. changing pads / clothes / bedding for incontinent residents. 	<ul style="list-style-type: none"> Requiring ONLY prompts or limited personal care e.g. changing pads/clothes/bedding for incontinent residents. 	<ul style="list-style-type: none"> Requiring ONLY prompts or limited personal care e.g. changing pads/clothes/bedding for incontinent residents. 	<ul style="list-style-type: none"> Requiring ONLY prompts or limited personal care e.g. changing pads/clothes/bedding for incontinent residents.
<ul style="list-style-type: none"> Individuals requiring ongoing assistance with essential living skills who may be at significant risk of self-neglect or exploitation. 	<ul style="list-style-type: none"> Individuals requiring ongoing assistance with essential living skills who may be at significant risk of self-neglect or exploitation. 	<ul style="list-style-type: none"> Individuals requiring ongoing assistance with essential living skills who may be at significant risk of self-neglect or exploitation. 	<ul style="list-style-type: none"> Individuals requiring ongoing assistance with essential living skills who may be at significant risk of self-neglect or exploitation.
			<ul style="list-style-type: none"> We are a rehab model that looks to help enable people to step down into the community and this will be our ongoing mission.