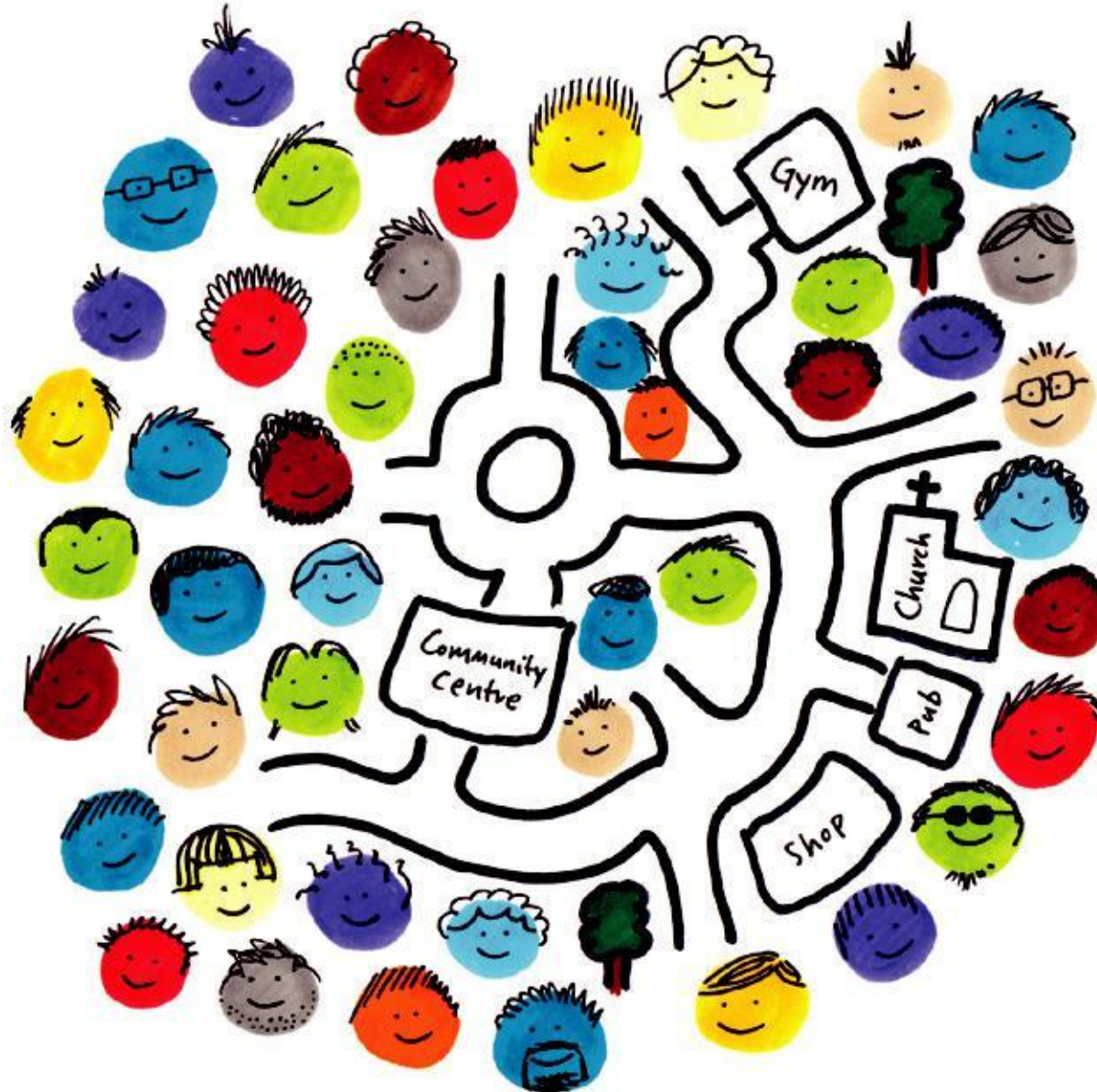


Norton Street

Specialised care in a unique community based environment

DeepdeneCare



Delivering outcomes based support and rehabilitation to those looking to re-engage with the community, Norton Street is a unique and vibrant service close to the city centre.

Norton Street



01.

Norton Street is a specialised service for 25 adults experiencing high and complex mental health needs, who are looking to move through their care pathways to a more community based service. Centrally located in Old Trafford, Manchester, Norton Street is ideally situated to take advantage of excellent local facilities and transport links as well as all of the attractions of a major city.

Deepdene Care, an established national mental healthcare provider, has operated Norton Street since its acquisition in 2008 and has made a significant investment in the service provision and infrastructure. With services operating throughout the UK, the group has developed strong and stable compliance, governance and central support frameworks which Norton Street benefits from.

Those living at Norton Street present with severe and enduring mental illnesses, challenging behaviour, and drug or alcohol dependency. We are well equipped to accommodate those who exhibit behaviours such as self-harm, personality disorders, or those with dual diagnosis.

Individual care

Norton Street comprises eight terraced houses, with individual bedrooms for service users, providing a unique setting for them to enjoy the benefits of independent living with the support of a residential care service. Each house has its own living areas and kitchen, and service users are encouraged to treat the environment as their own home, getting involved in all aspects of daily living.

24 hour support is provided by a highly skilled multi-disciplinary team, consisting of an experienced and qualified home manager leading a team of key workers, care support workers and activities staff.

In line with the personalisation agenda, service users are encouraged to be actively involved in their local community and are supported in daily activities such as managing finances, meal planning and preparation. Our excellent community links enable us to maximise opportunities for social inclusion and take advantage of activities offered in the area.

Service users are encouraged to focus on their recovery by working with us to develop individualised pathways of care that encourage positive risk taking and focus on individuals' strengths and aspirations, enabling them to take an active part in their care and rehabilitation program.

Positive outcomes

In close proximity to Prema Court, Norton Street is often the final part of the journey for many service users before they move towards more permanent independent living, while retaining the strong support networks that facilitate this transition.

Referrals

At Deepdene Care we welcome referrals from all areas of mental health care and are committed to making this process as unintrusive and stress free as possible.

The referral process is reactive and easy to use, with a direct line to our dedicated referral team.

Following a referral a senior member of our multi-disciplinary team will arrange to carry out a full assessment within 24 hours at a time and venue that best suits the individual's need.

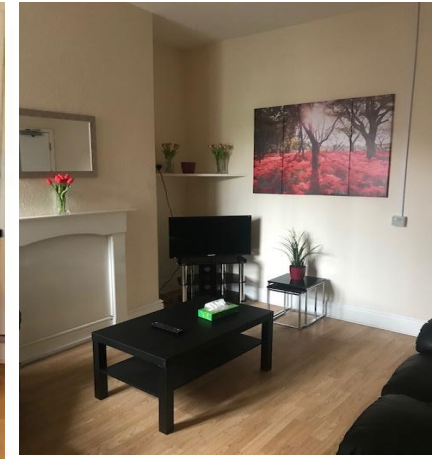
After this assessment our multi-disciplinary team will review the case and if suitable a placement offer and full breakdown of costs will be sent to the referring agency within seven working days.

Once the placement is agreed we will work closely with the individual and their care team to ensure a smooth and successful transition.

Referral line:
0800 313 4774



02.



03.



04.



05.

Creating a relaxing and homely environment for service users.

- 01. Norton Street exterior
- 02. Kitchen
- 03. Lounge in another house
- 04. Lounge
- 05. Bedroom

If you would like to arrange
an informal visit please
contact us on our referral line:

0800 313 4774

www.deepdenecare.org

DeepdeneCare

Norton Street
28 Norton Street
Old Trafford
Manchester
M16 7GQ

t: 0161 226 2979 f: 0161 227 0427
e: nortonstreet@deepdenecare.org

Deepdene Care: 2 The Courtyard, 707 Warwick Road, Solihull, West Midlands, B91 3DA

t: 020 370 1222

e: info@deepdenecare.org



How to find Norton Street:

Road:

Norton Street is located just off Ayres Road, a couple of minutes from the B5283, and five minutes from junction 3 of the M56 via A5103 Princess Parkway. On street parking is available.

Public transport:

Bus routes 86 and 15 both stop on Chorlton Road, a 5 minute walk from Norton Street.

Piccadilly Train Station is 20 minutes away.

Norton Street is a 15 minute taxi-ride from Manchester Airport.