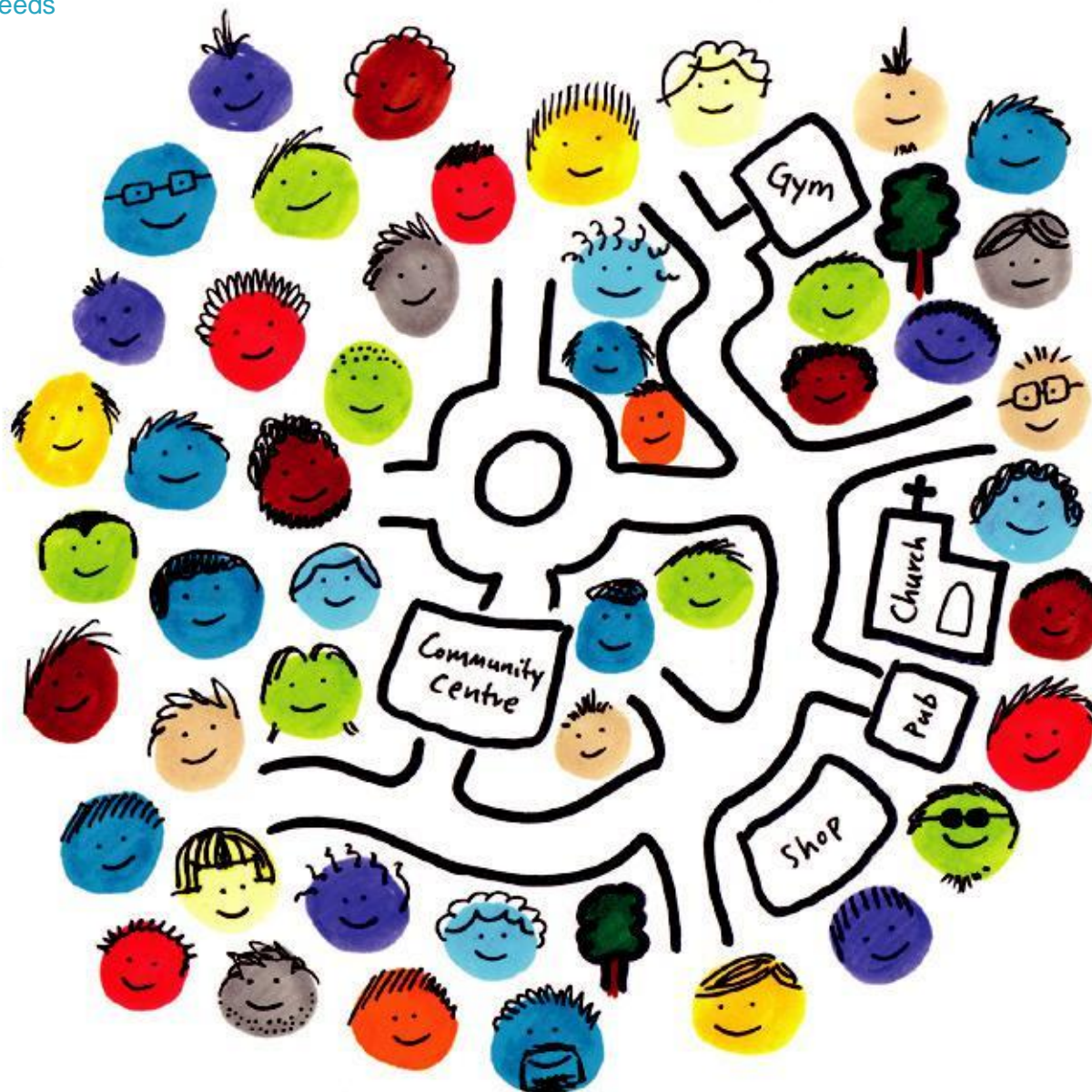


Deepdene Court

Fieldings

DeepdeneCare

A community based service, providing rehabilitative support for adults with severe and enduring mental health needs



Based in the seaside town of Littlehampton, West Sussex, Fieldings specialises in caring for individuals requiring ongoing assistance with essential living skills who may be at significant risk of self neglect or exploitation.



01.

Deepdene Court - Fieldings

Part of Deepdene Court, Fieldings is a specialised service for 15 adults experiencing severe and enduring mental health needs who currently need ongoing extensive support which may not be available in other environments. Centrally located in Littlehampton, West Sussex, Fieldings is ideally situated to take advantage of excellent local facilities and transport links as well as all of the attractions that this seaside town has to offer.

Deepdene Care, an established national mental healthcare provider, has operated Fieldings since its acquisition in 2006 and has made a significant investment in the service provision and infrastructure. With services operating throughout the UK, the group has developed strong and stable compliance, governance and central support frameworks which Fieldings benefits from.

Those living at Fieldings present with severe and enduring mental illnesses, challenging behaviour, and drug or alcohol dependency. We are well equipped to accommodate those who exhibit behaviours such as self-harm, personality disorders, or those with a dual diagnosis.

Individual care

The safe and homely environment at Fieldings encourages service users to develop the skills and coping strategies needed to manage their conditions, ultimately leading to an improvement in their confidence and social interaction. Our excellent community links enable us to maximise opportunities for social inclusion and take advantage of activities offered in the area.

Service users at Fieldings are supported by a highly skilled multi-disciplinary team, consisting of a regional manager, an experienced home manager and a team of nurses, key workers, care support workers and activities staff who provide 24 hour support.

Our service delivery is based upon inclusion and the provision of person centred care and sensitive treatment for individuals, following the principles of the recovery model. It is aimed at improving mental and physical health, reducing and eliminating inappropriate behaviour and risks and replacing them with appropriate patterns of coping, problem solving and improved personal and social skills.

Service users are encouraged to focus on their recovery by working with us to develop individualised pathways of care that encourage positive risk taking and focus on individuals strengths and aspirations, enabling them to take an active part in their care and rehabilitation program.

Positive outcomes

Our service users are individuals in their own right with their own specific and often complex needs, and personalisation is a key element of our service. Our goal is to offer the range of support needed to enable the individual to work towards achieving the most positive outcome for them, whether this is a return to independent living and employment, or to a supported environment where they can access all the services the community has to offer.

Through Deepdene Court, Fieldings has access to both nursing services as well as supported living services. Within Fieldings there are 2 self contained flats allowing for more independent living, providing the opportunity for service users to progress with their care within an appropriate environment, should their needs change.



02.



03.

Referrals

At Deepdene Care we welcome referrals from all areas of mental health care and are committed to making this process as unintrusive and stress free as possible.

The referral process is reactive and easy to use, with a direct line to our dedicated referral team.

Following a referral a senior member of our multi-disciplinary team will arrange to carry out a full assessment within 24 hours at a time and venue that best suits the individual's need.

After this assessment our multi-disciplinary team will review the case and if suitable a placement offer and full breakdown of costs will be sent to the referring agency within seven working days.

Once the placement is agreed we will work closely with the individual and their care team to ensure a smooth and successful transition.



04.



05.

Creating a relaxing and homely environment for service users.

- 01. Littlehampton waterfront
- 02. Fieldings exterior
- 03. Points of interest
- 04. Entrance
- 05. Bedroom
- 06. Kitchen



06.

**Referral line:
0800 313 4774**

If you would like to arrange
an informal visit please
contact us on our referral line:

0800 313 4774

www.deepdenecare.org

DeepdeneCare

Deepdene Court- Fieldings
2/5 St Catherine's Rd
Littlehampton
West Sussex
BN17 5HS

t: 01903 719187 f: 01903 723904
e: deepdenecourt@deepdenecare.org

Deepdene Care: 2 The Courtyard, 707 Warwick Road, Solihull, West Midlands, B91 3DA

t: 020 3370 1222 e: info@deepdenecare.org



How to find Deepdene Court:

Road:

St Catherine's is easily accessible by road and is three minutes by car from the A284 and Littlehampton High Street, just off the B1240. Parking is available.

Public transport:

Bus routes 9 and 700 both stop close by and Littlehampton railway station is a 10 minute walk away.