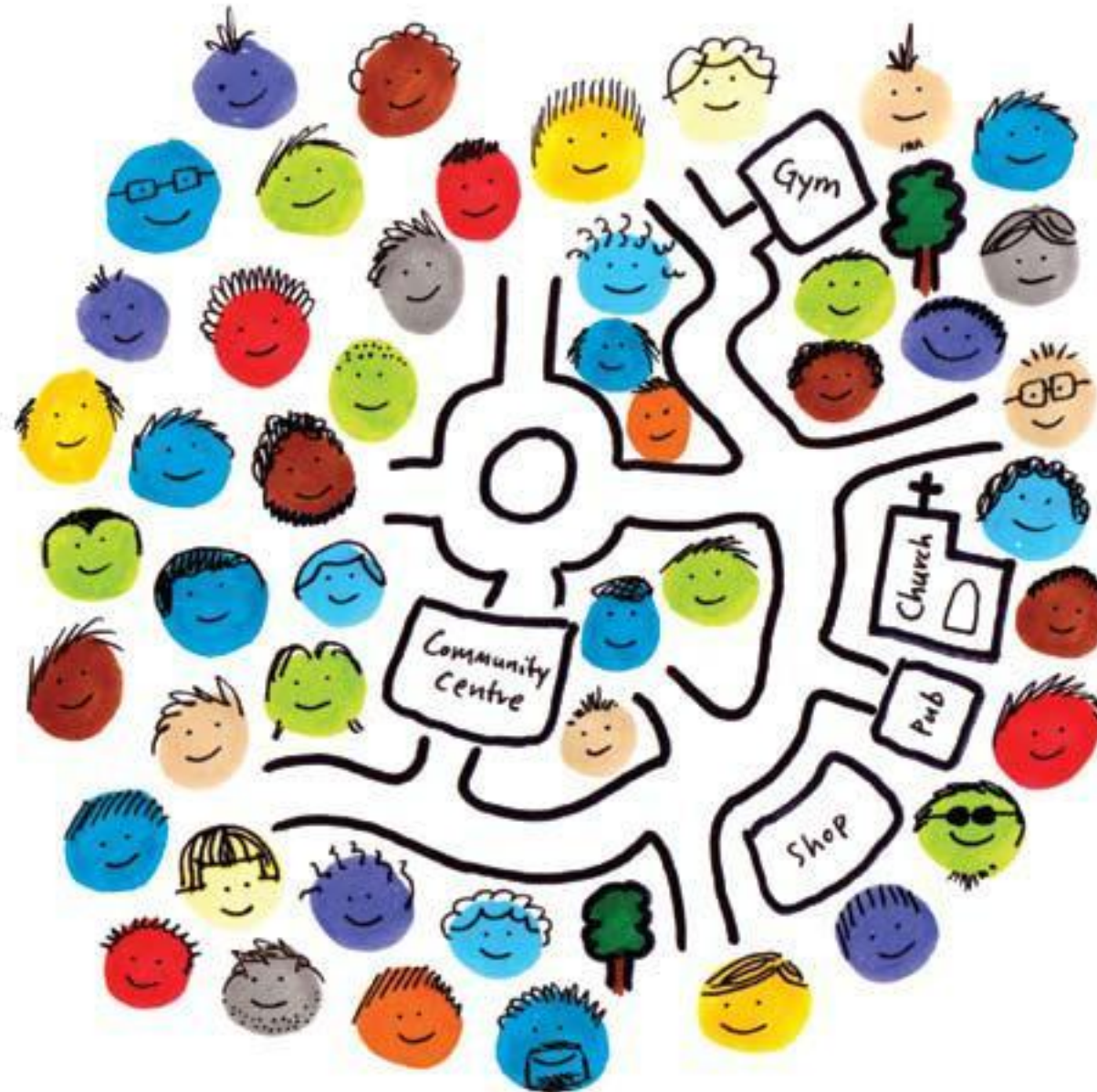


# Deepdene House

A modern community based specialist service for adults with complex and difficult to manage mental health needs

# DeepdeneCare



Delivering outcomes based support and rehabilitation to those often reluctant to engage in therapeutic programs, Deepdene House is a progressive and vibrant service at the heart of the community.



01.

# Deepdene House

Deepdene House is a specialised service for 20 adults experiencing high and complex mental health needs, who are often difficult to engage with and require intensive support and interaction. Located at the hub of the community in Streatham, South London, Deepdene House offers access to a variety of local services and amenities as well as all the benefits of a central London location.

Deepdene Care, an established national mental healthcare provider, has operated the service since its formation in 1987 and has continued to build on the reputation of Deepdene House. With services now operating throughout the UK, Deepdene Care has developed strong and stable compliance, governance and central support frameworks which Deepdene House benefits from.

Those living at Deepdene House often exhibit high and complex mental health needs including severe and enduring mental illnesses, challenging behaviour, and drug or alcohol dependency. We are well equipped to accommodate those who exhibit behaviours such as self-harm, personality disorders, or those with a dual diagnosis.

## Individual care

Following extensive refurbishment in 2010, Deepdene House provides an environment where social integration is encouraged and our service users are able to recover in a safe and modern setting. With the focus on rehabilitation, care and support programs are tailored to take account of individual service users needs and always reflect individual choice. Our excellent community links enable us to maximise opportunities for social inclusion and take advantage of activities offered in the area.

Led by a highly skilled manager, the care team consists of experienced key workers, care support workers and activities staff who provide 24 hour support.

Working to the principles of the recovery model, our service delivery is based upon inclusion and the provision of person centred care and sensitive treatment for individuals. It is aimed at improving mental and physical health, reducing and eliminating inappropriate behaviour and risks and replacing them with appropriate patterns of coping, problem solving and improved personal and social skills.

We develop partnerships with each individual service user and focus on their recovery through the formulation of individualised pathways of care that focus on their strengths and aspirations, empowering each individual to engage in positive risk taking in their care and rehabilitation program.

## Positive outcomes

We recognise that each service user is an individual in their own right with their own specific and often complex needs. Our goal is to offer the range of support needed to enable the individual to work towards achieving the most positive outcome for them, whether this is a return to independent living and employment, or to a supported environment where they can access all the services the community has to offer.

# Referrals

**At Deepdene Care we welcome referrals from all areas of mental health care and are committed to making this process as unintrusive and stress free as possible.**

The referral process is reactive and easy to use, with a direct line to our dedicated referral team.

Following a referral a senior member of our multi-disciplinary team will arrange to carry out a full assessment within 24 hours at a time and venue that best suits the individual's need.

After this assessment our multi-disciplinary team will review the case and if suitable a placement offer and full breakdown of costs will be sent to the referring agency within seven working days.

Once the placement is agreed we will work closely with the individual and their care team to ensure a smooth and successful transition.

---

Referral line:  
**0800 313 4774**

---



02.



03.



04.



05.

**Creating a relaxing and homely environment for service users.**

- 01. Deepdene House exterior
- 02. Lounge/dining room
- 03. Entrance
- 04. Rear garden
- 05. Bedroom
- 06. Dining room



06.



If you would like to arrange  
an informal visit please  
contact us on our referral line:

**0800 313 4774**

[www.deepdenecare.org](http://www.deepdenecare.org)

**DeepdeneCare**

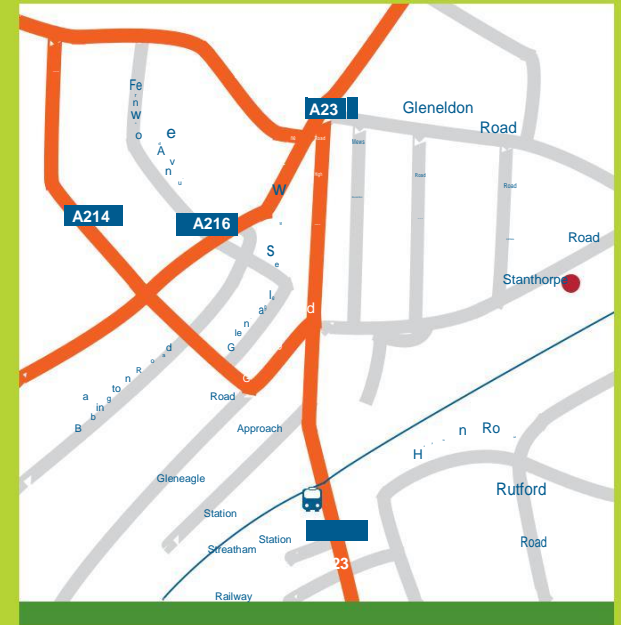
Deepdene House  
55/57 Stanthorpe Road  
Streatham  
London  
SW16 2EA

t: 020 8769 6297 f: 020 8696 6551  
e: [deepdenehouse@deepdenecare.org](mailto:deepdenehouse@deepdenecare.org)

Deepdene Care: 2 The Courtyard, 707 Warwick Road, Solihull, West Midlands, B91 3DA

t: 020 370 1222

e: [info@deepdenecare.org](mailto:info@deepdenecare.org)



### How to find Deepdene House:

#### Road:

Deepdene House is located just off the A23 in Streatham and parking is available.

#### Public transport:

Bus routes 57, 109, 133, 159, 249, 250, 315 and 333 all serve the nearby A23, and Streatham railway station is a 5 minute walk away.